



THE BENEFITS :

- Manufactured in our workshop
- Highly visible and reliable for increased safety in tunnels
- Adjustable mounting bracket

Technical specifications

DIMENSIONS & WEIGHT	<ul style="list-style-type: none"> • Standard or custom dimensions
MATERIALS	<ul style="list-style-type: none"> • Aluminum housing + optional black paint (optional stainless steel)
POWER	<ul style="list-style-type: none"> • 230V
LIGHT SOURCE	<ul style="list-style-type: none"> • LED tubes or LED bulbs • Access via hinged stainless steel front panel
SYMBOLS	<ul style="list-style-type: none"> • Fire extinguisher and emergency call signs
SOURCE CONTROL	<ul style="list-style-type: none"> • TOR
WIRING	<ul style="list-style-type: none"> • Powers cables can be routed through holes drilled in the aluminum housing by you, depending on the position of the box
FIXATION	<ul style="list-style-type: none"> • Fixation using an adjustable mounting bracket provided
PROTECTION RATING	<ul style="list-style-type: none"> • IP65 – IK09
OPTIONS	<ul style="list-style-type: none"> • Light source monitoring cells • Other symbols or sizes available

Manufactured in our workshop

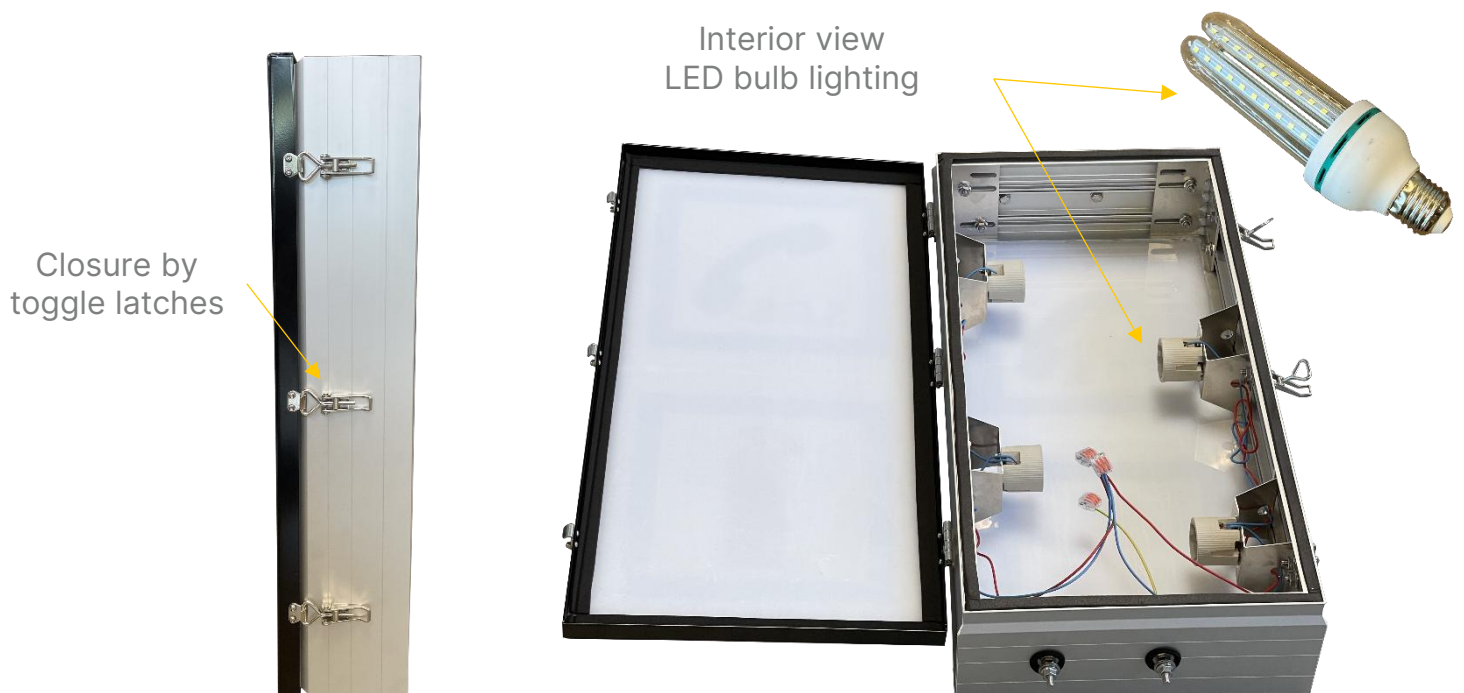
Backlit box in standard or custom sizes

Symbol of 500 or 700mm (other dimensions on request)



Front

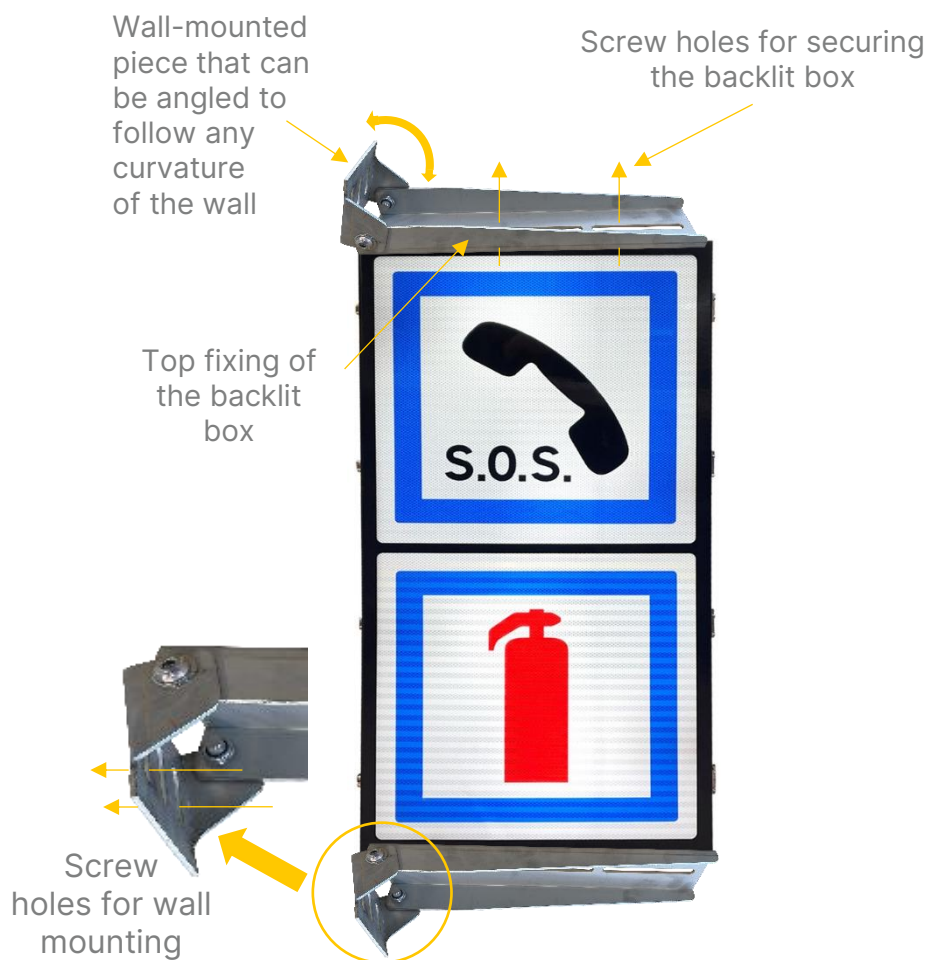
Back



FIXATION (adjustable fixing piece designed for tunnels) :

Top mounting of the backlit box

Alternative : side mounting



POWER (230V) :

