



THE BENEFITS :

- Manufactured in our workshop
- Highly visible and reliable for greater safety in tunnels
- Adjustable mounting bracket

Technical specifications

DIMENSIONS & WEIGHT	<ul style="list-style-type: none"> • Standard or custom dimensions
MATERIALS	<ul style="list-style-type: none"> • Aluminum housing + optional black paint (optional stainless steel)
POWER	<ul style="list-style-type: none"> • 230V
LIGHT SOURCE	<ul style="list-style-type: none"> • LED tubes or LED bulbs • Access via hinged stainless steel front panel
DISPLAY	<ul style="list-style-type: none"> • Emergency exit sign on both sides
SOURCE CONTROL	<ul style="list-style-type: none"> • TOR
WIRING	<ul style="list-style-type: none"> • Powers cables can be routed through holes drilled in the aluminum housing by you, depending on the position of the box
FIXATION	<ul style="list-style-type: none"> • Fixation using an adjustable mounting bracket provided
PROTECTION RATING	<ul style="list-style-type: none"> • IP65 – IK09
OPTIONS	<ul style="list-style-type: none"> • Light source monitoring • Other symbols and sizes on request

Backlit box in standard or custom sizes

Symbol of 500 ou 700 mm (other dimensions available on request)



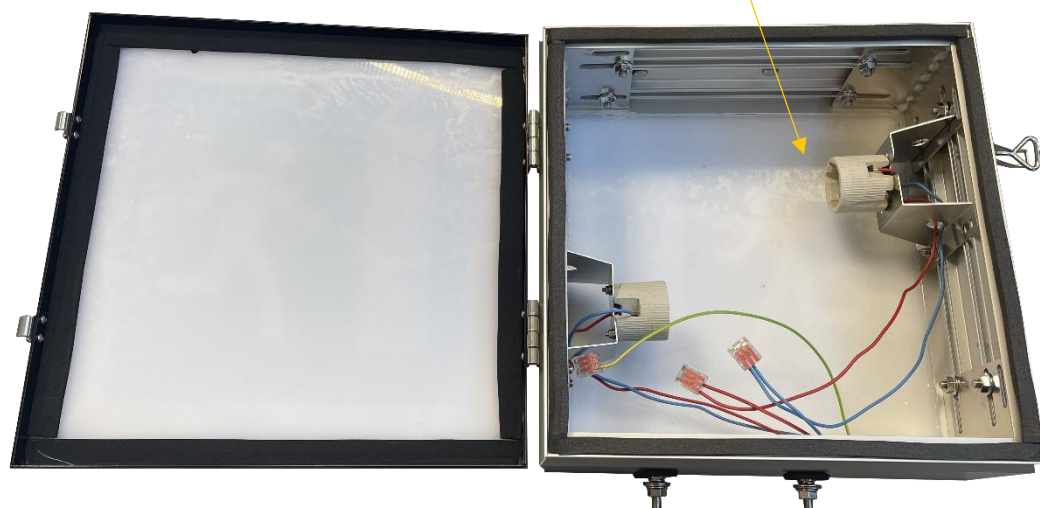
Front



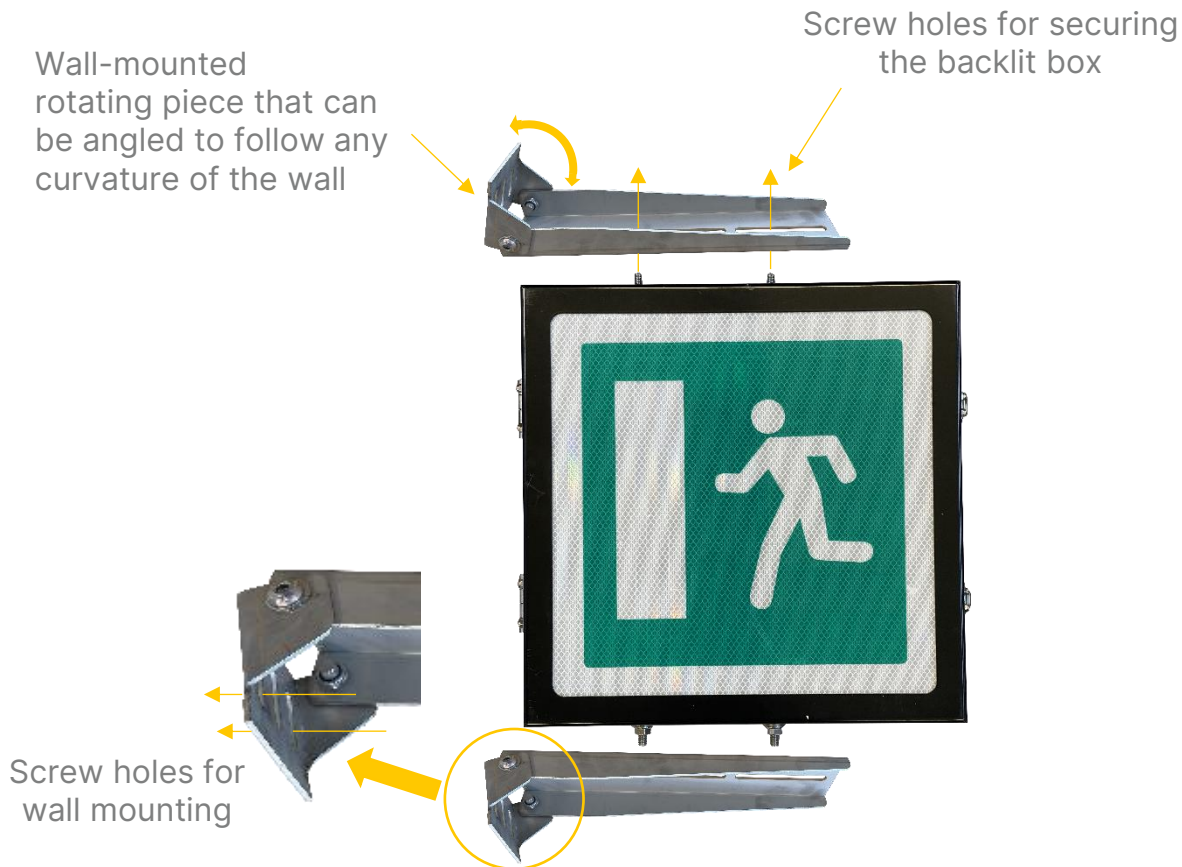
Back

Toggle
Fastener

Interior view
LED bulb lighting



FIXATION (Adjustable fixing piece designed for tunnels) :



POWER (230V) :

